



Regulatory Review of Roundup Ready Alfalfa

Virgil Meier
USDA APHIS BRS



Outline

- Regulatory history of Roundup Ready (RR) alfalfa
- Status of RR alfalfa Environmental Impact Statement (EIS)

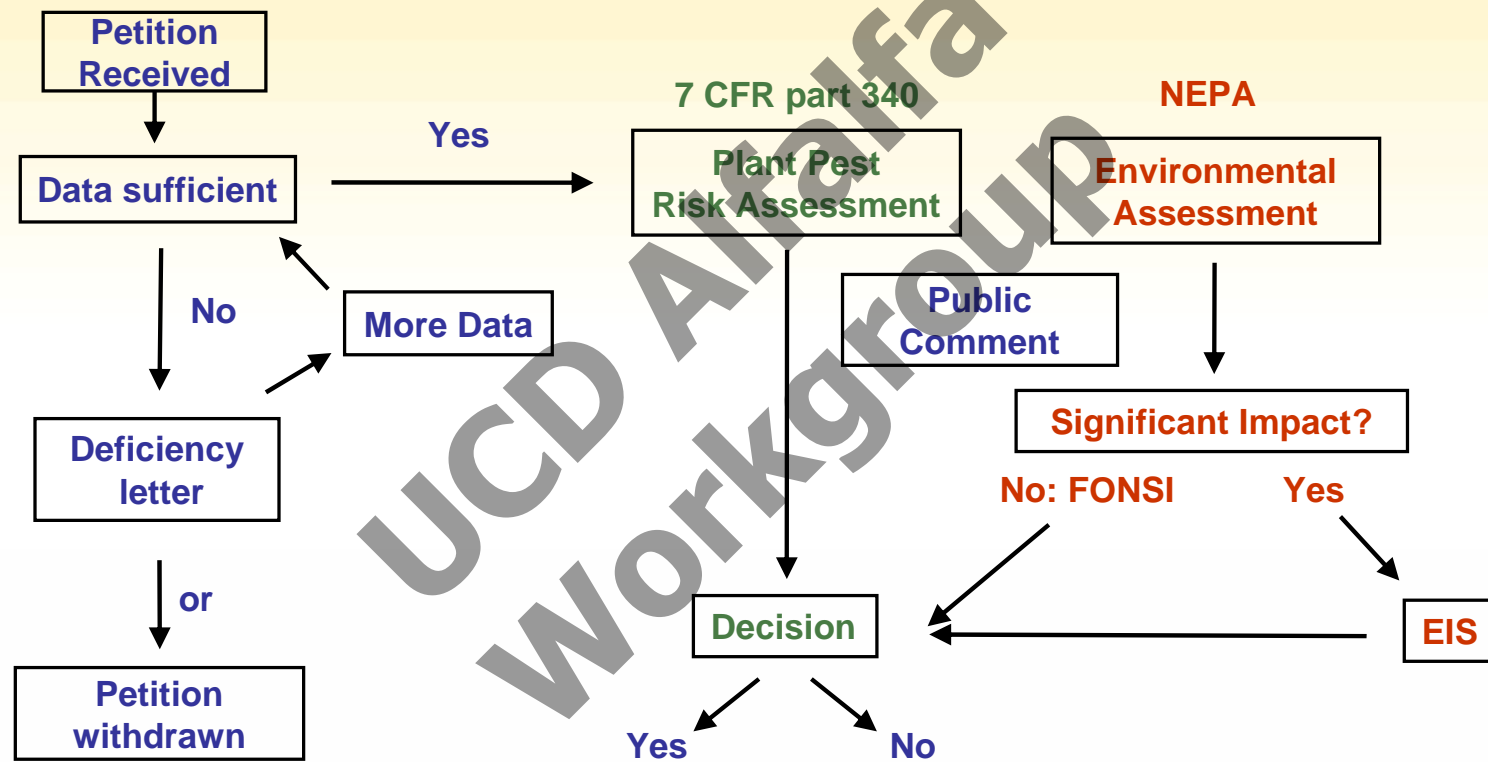


Regulatory History at APHIS

➤ RR Alfalfa

- **2003 – Petition for deregulation submitted for RR alfalfa**
- 2005 - APHIS comes to a FONSI and deregulates RR alfalfa
- 2007- Lawsuit ruling disagreed with FONSI and reversed deregulation
- 2007 – EIS process initiated

Petition Process



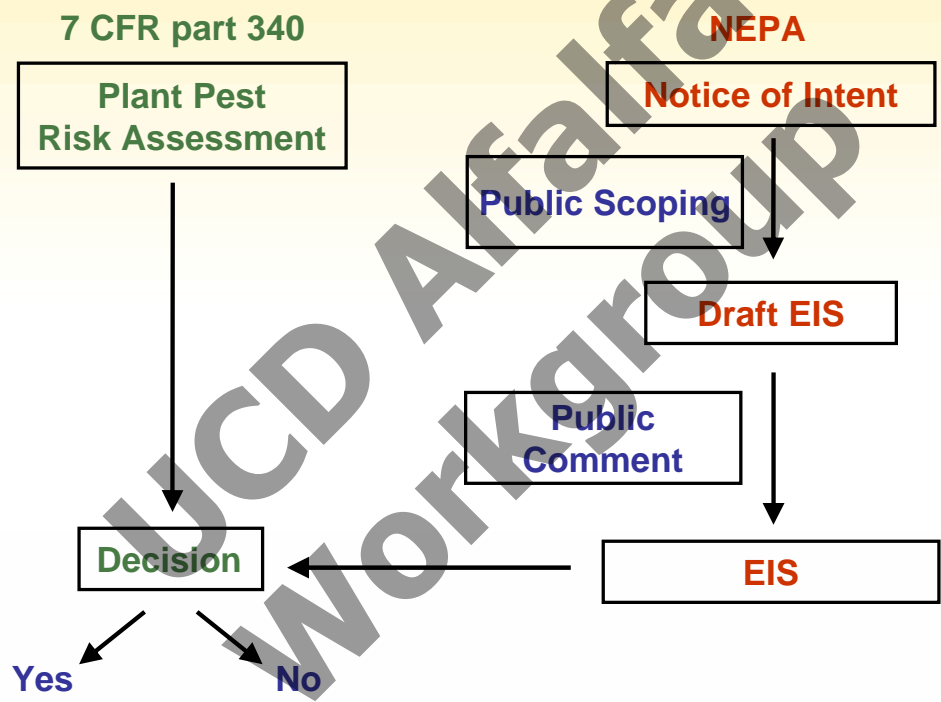


Regulatory History

➤ RR Alfalfa

- 2005 – APHIS reached a FONSI and deregulates RR alfalfa
- 2007- Lawsuit ruling disagreed with FONSI and reversed deregulation
- 2007 – EIS process initiated
- 2008 – Notice of Intent Published

EIS Process



What NEPA does

- Requires the agency to take a “hard look” at the environmental consequences of major federal actions
- Requires interdisciplinary planning
- Prescribes participation by the public in the planning process
- Ensures full disclosure about the proposed action, alternatives, environmental impacts, and possible mitigation

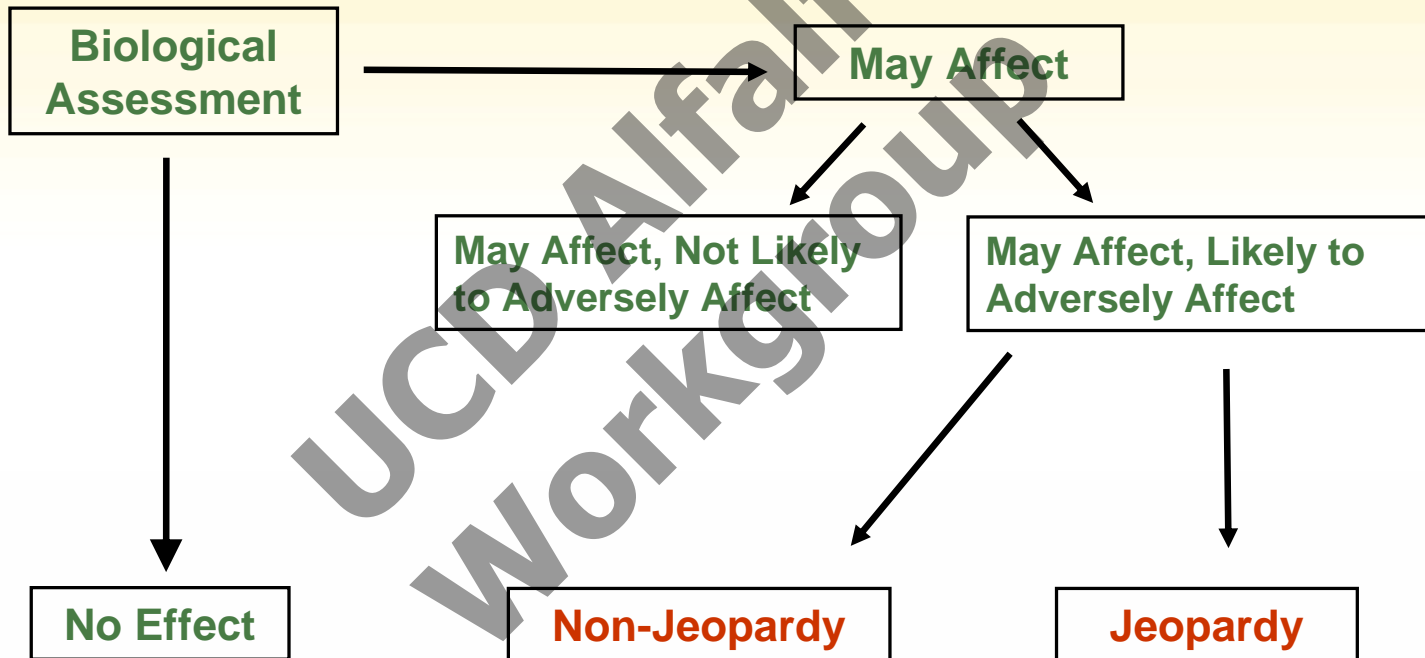
What NEPA does not do

- Decide or select alternatives
- Prevent environmental impacts
- Prohibit any action
- Justify a pre-determined action
- Require full mitigation of all environmental impacts

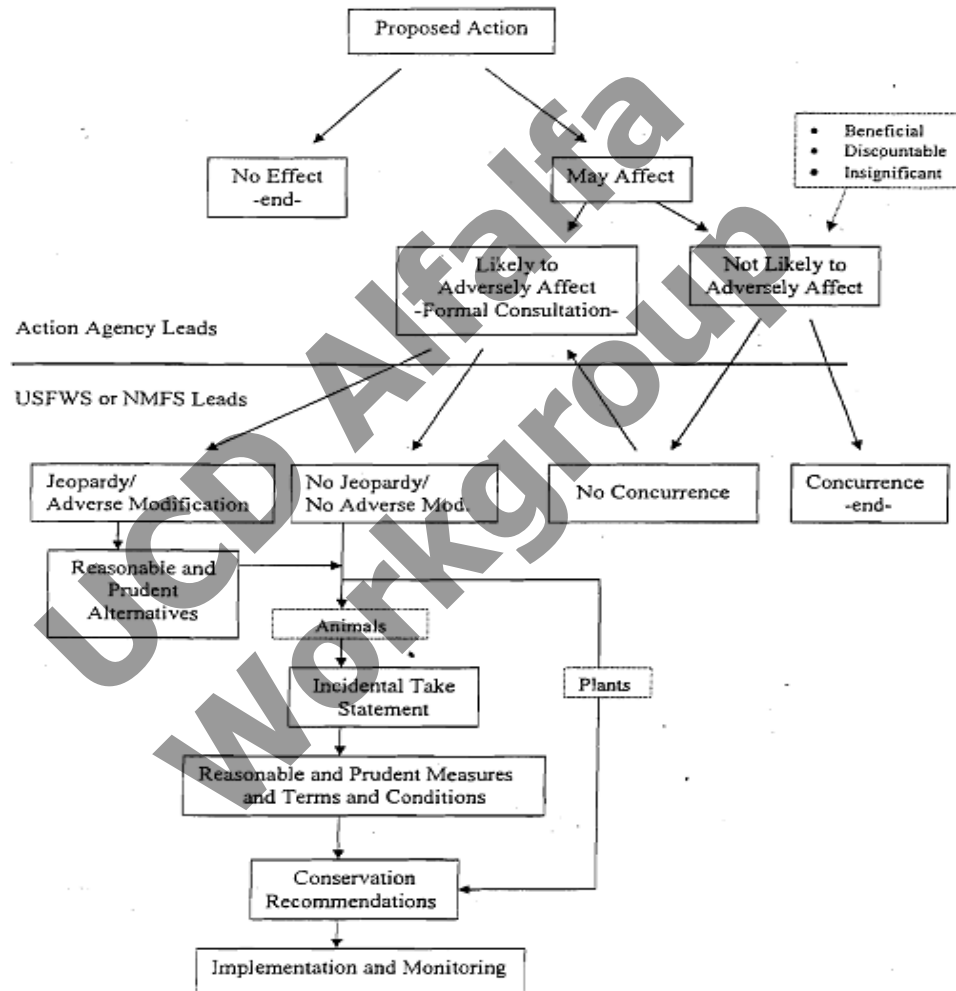
Threatened & Endangered Species

USDA-APHIS

Fish & Wildlife Services



ESA Section 7 Consultation Flow Chart





RR Alfalfa EIS Summary

- Environmental Impact Statement (EIS)
 - Notice of Intent: Jan 2008
 - Contractor selected and deliverables are being completed
 - BRS has started assembling sections of EIS
 - APHIS indicated to the judge that the EIS could take 2 years to complete



For More Information:

- BRS Alfalfa:
<http://www.aphis.usda.gov/biotechnology/alfalfa.shtml>
- To review scoping comments on the NOI for RR Alfalfa EIS:
<http://www.regulations.gov>
- BRS website:
http://www.aphis.usda.gov/biotechnology/brs_main.shtml