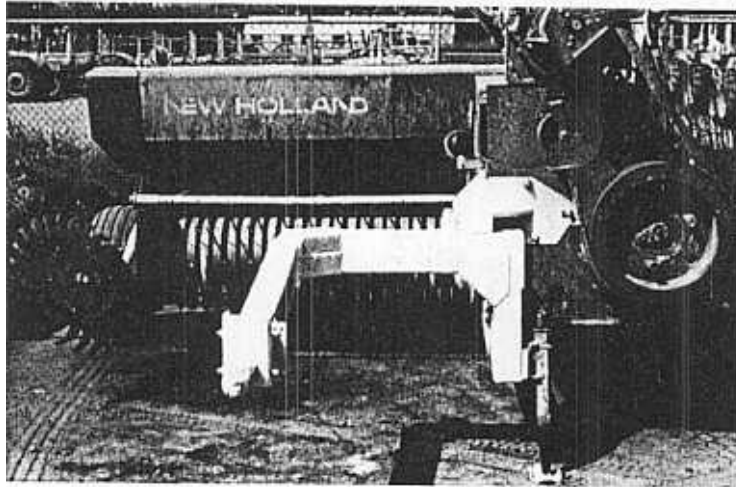


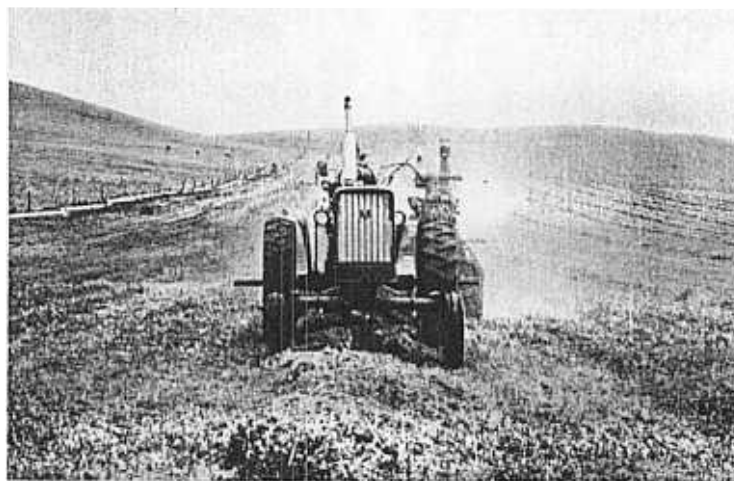
MODIFYING AVAILABLE HARVEST EQUIPMENT

Jerry Welker, President
Kimco Manufacturing Company
Fresno, California

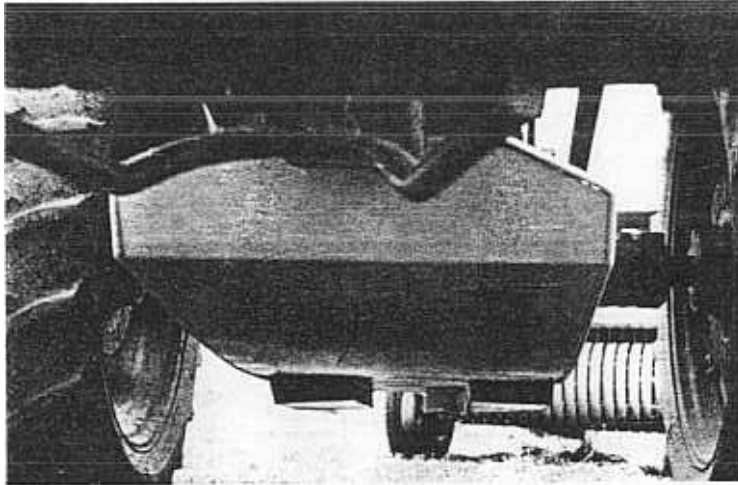
Mr. Welker was not available to prepare a written paper. However, the photographs below indicate some of the modifications that have been made to commercial equipment to reduce traffic patterns in alfalfa hay fields.



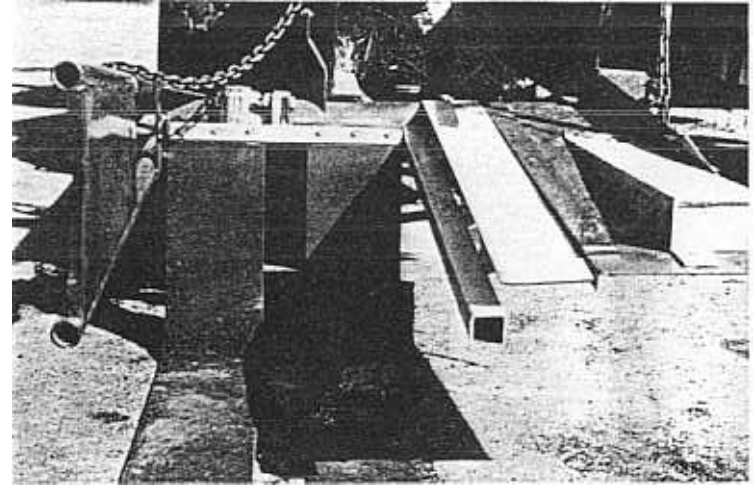
Modification to tongue to allow tractor to straddle windrows



Tractor straddling windrow to pull baler. Note front and rear tractor wheels are using the same track.



When some balers straddle windrows with modified tongue to pull balers, they need a "belly-plate" for protection



A modified bale discharge attachment to baler which moves the bale 6" to the left of its original position. This aligns the bale pick up wagon wheels to those of the baler wheels.



Alfalfa field with normal traffic patterns, three days after bale pick up wagon passed. A 16-foot swather was used. Note narrow area without traffic.



An alfalfa field with modified traffic area, three days after bale pick up wagon passed. A 16-foot swather used. Note wide areas without traffic.